

Job 42:7

THE MISTAKES MINISTRIES MAKE

Rev. Dr. Howard-John Wesley



Village Meeting Week of:

October 15, 2018

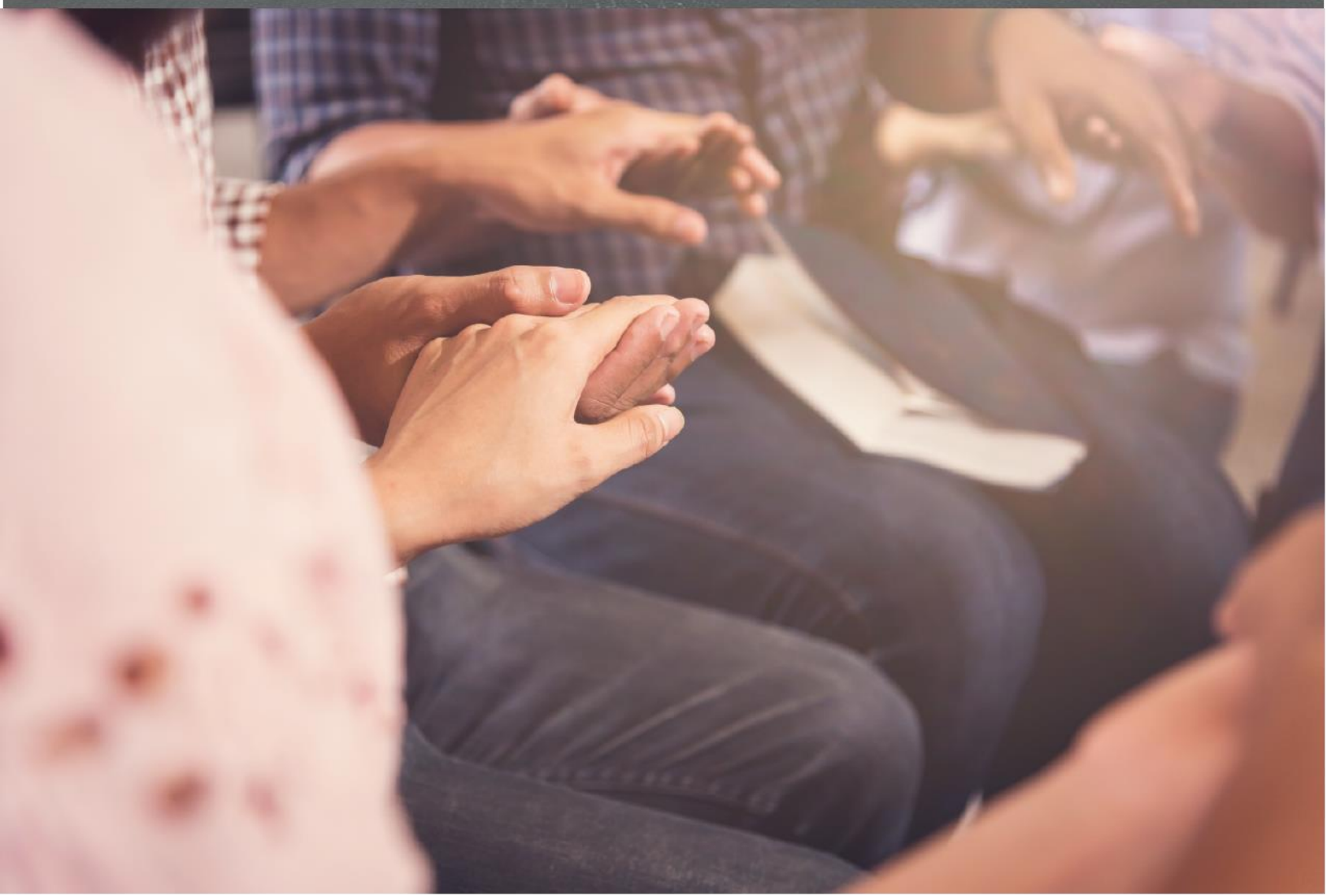
Sermon Date:

October 14, 2018

CURRICULUM GUIDE

Notes for Facilitators:

Please begin and end each Village Discussion with prayer. The curriculum guide contains a brief synopsis of the sermon for the week. As well, below are discussion questions and activities that you may use for your Village weekly meeting. This guide is meant to be a resource for the discussion. You don't have to go through all of the questions, they simply serve to jumpstart the conversation. While you have flexibility to choose the questions and activities that most resonate with your group, please always keep in mind the aim for the discussion: to lead Villagers into deeper relationship with God through discussion of the sermon, and to provide for deep connection among members of the group.





Sermon Summary

This week's sermon showed us that there are two major mistakes Job's friends made that unfortunately Christians still make today. They made a direct connection between suffering and sin which ultimately leads to a denial of mercy and grace. They also spoke with absolute certainty when sovereignty demands mystery. We as a people of God are valid in taking our own experience to confirm what we believe God will do, but we have no grounds to ever declare what God won't do.

Key Points

The assessment that suffering is connected to sin:

1. Cultivates a sense of guilt that contradicts God's mercy.
2. Establishes a self-righteousness that contradicts God's grace.
3. Asserts a certainty that contradicts God's sovereignty.

Getting To Know You Questions:

- 1) Now This sermon reminded us that God is sovereign. God does what God wants without question and God operates in our lives in ways that we don't understand. Let's complete an exercise that will allow us to take God outside of our box. List 3 things that God did in your life that blew your mind! After sharing, Post the sticky note on the wall for all to see how God exceedingly & abundantly blesses us. Throughout the week remember this exercise whenever you begin to limit God and remember that God is "bigger".
- 2) We all have Eliphaz, Bildad, and Zophar figures in our lives, friends who mean well, but don't give us sound advice. Who are you struggling to stop listening to and why? Also consider if you have played the role of Eliphaz, Bildad, and Zophar in the life of a friend, family member, or associate. Who is that person and how can you begin to reevaluate the relationship?

Into The Bible Questions:

- 3) Pastor Wesley referenced Matthew 7:3 where Jesus says, "Why do you see the speck in your neighbor's eye, but do not notice the log in your own eye?" If God calls us to introspection why are we so inclined to hold others to a higher standard than we hold ourselves?
- 4) In this sermon, three attributes of God were highlighted--God's mercy, grace, and sovereignty. What other attributes of God do you see in Job's story. What attributes of God do you see in your current situation?

Life Application Questions:

- 5) How do you interpret grace and mercy in a way that you can explain it to others that may not understand the power of it?
- 6) As believers we've all endured our fair share of struggles as we prayed for blessings. During the times you struggled did you find yourself questioning God asking "why me" "why now" or "when will this end"? Do you feel during those times that your faith in God wavered or did it get stronger?
- 7) So many Christians have a burning desire to understand why things happen, but this week's sermon taught us that "Sovereignty requires mystery." How does God's sovereignty challenge you when circumstances in life seem unfair?



"Can I Push It?"

Pastor Wesley said that, "God isn't a Christian." How does that statement resonate with you? What label/limit are you struggling to take off of God?

Activity:

This sermon exposed two conflicting, mutually exclusive concepts:

- 1) God is omnipotent, and*
- 2) The presence of evil is a reality.*

The facilitator(s) will post two pages of a flipchart on the wall. The facilitator(s) will give each participant 5 slips of paper. On the slips, the participants will write examples of where they see either God's omnipotence or the presence of evil in their lives. Each person will then tape these examples on the flipcharts. Allow the group time to read what the group members have posted. The facilitator(s) will then ask, "What displays of God's omnipotence are most exciting? Which examples of evil are most disturbing? How are your prayers affected by what you see in these two categories?"



Spirit Work:

The book of Job, like the book of Psalms, is a book of poetry. This week our task is to learn to trust God even as we embrace the mystery of God. Start each day this week by writing a poem, prayer, or letter to God that shares the true feelings of your heart.

OR

Think of a situation where you received God's mercy, experienced God's grace, and had to be reminded of God's sovereignty. Write a brief description of each situation and bring it to the next Village meeting to share with one or two people.