

Alfred Street Baptist Church  
Alexandria, VA

“4<sup>TH</sup> COMMUNITY MEETING”

February 2, 2017

Alfred Street Baptist Church  
Alexandria, VA

WELCOME

Deacon James Garrett

Alfred Street Baptist Church  
Alexandria, VA

# WHERE WE ARE IN THE PROCESS

Mary Catherine Gibbs

# STILL IN THE MIDDLE OF THE DEVELOPMENT REVIEW PROCESS

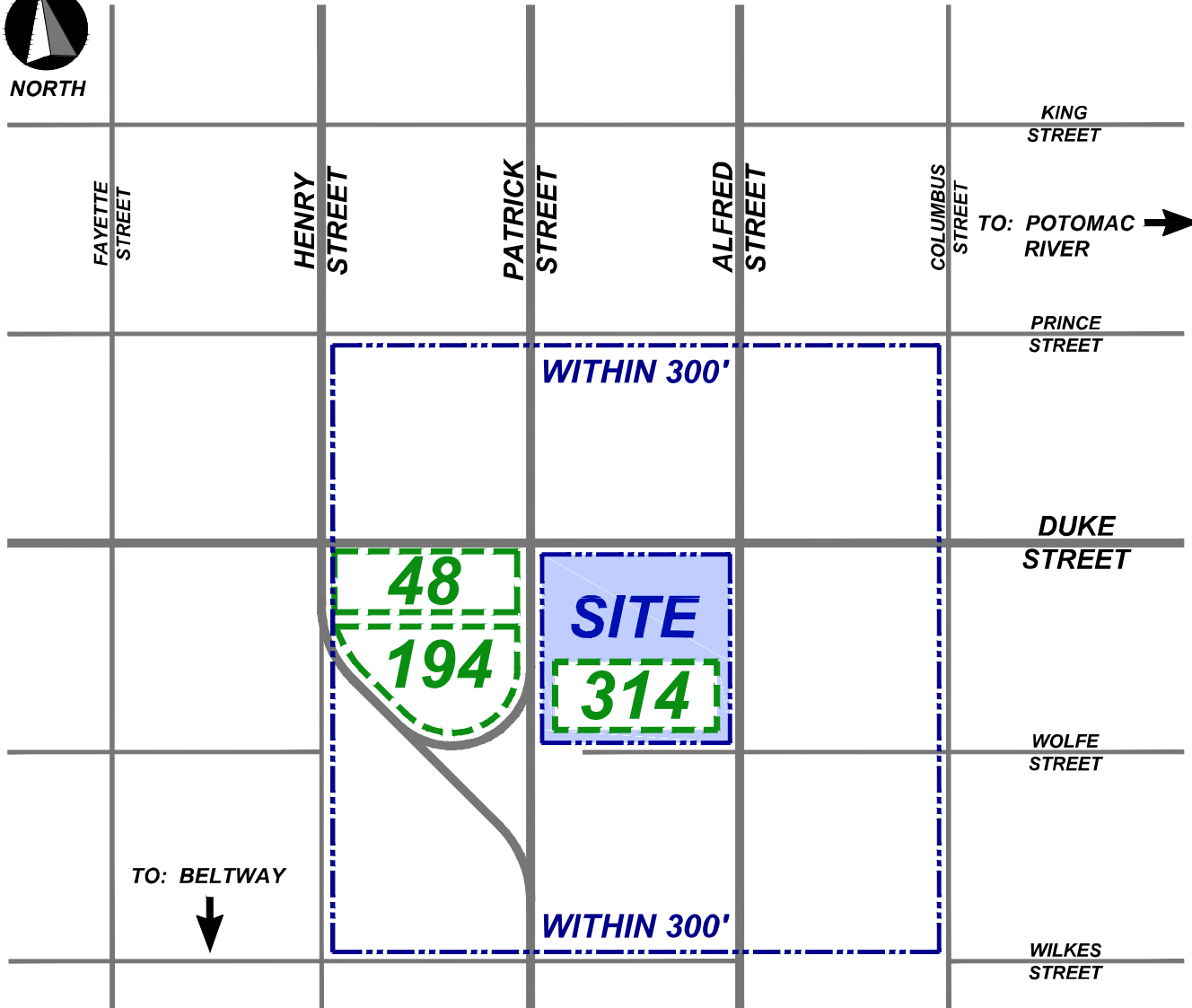
- Answered Questions from TE&S Staff on updated Traffic Study
- November – January, after BAR Concept Review, updated plans in response to comments. Returning for 2<sup>nd</sup> BAR Concept Review on February 15, 2017 at 7:30 PM
- Looking to make next full submission to the City with changes reflected from comments received by mid-February. On target for a May or June 2017 public hearing with Planning Commission and City Council.



# ON-SITE PARKING LOT LOCATIONS



NORTH



## ON-SITE PARKING LOT SUMMARY

<b>PROPOSED (ON-SITE)</b>	<b>314</b>
(WITHIN 300')	<b>48</b>
(WITHIN 300')	<b>194</b>
<b>TOTAL PROPOSED</b>	<b>556</b>

<b>REQUIREMENT</b>	<b>413</b>
<b>EXCEEDS REQUIREMENT</b>	<b>143</b>

REQUIREMENT 1 SPACE / 5 SEATS

$$\frac{2,065 \text{ SEATS}}{5 \text{ SEATS / SPACE}} = 413 \text{ SPACES}$$

PROPOSED 1 SPACE / 3.7 SEATS

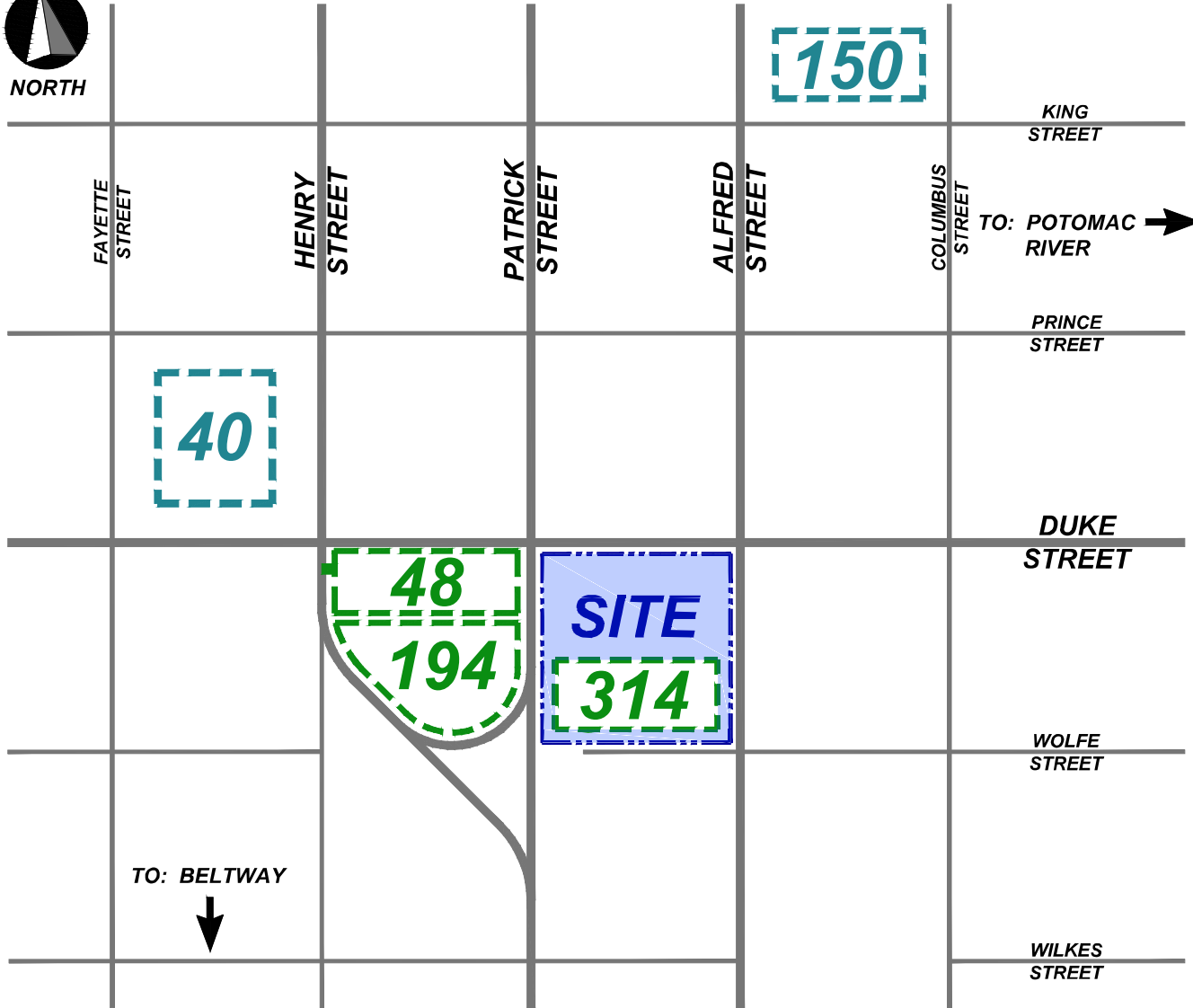


Wells + Associates, Inc.

# TOTAL PARKING LOT LOCATIONS



NORTH



## TOTAL PARKING LOT SUMMARY

<b>PROPOSED (ON-SITE)</b>	<b>314</b>
(WITHIN 300')	48
(WITHIN 300')	194
<b>OFFSITE</b>	<b>40</b>
<b>OFFSITE</b>	<b>150</b>
<b>TOTAL PROPOSED</b>	<b>746</b>
<b>REQUIRED</b>	<b>413</b>
<b>DIFFERENCE</b>	<b>333</b>

REQUIREMENT 1 SPACE / 5 SEATS

PARKED AT 1 SPACE / 2.77 SEATS



Wells + Associates, Inc.

# SEATING & PARKING SUMMARY

## SEATING

### Current Submission

Sanctuary = 1,829 seats  
Chapel = 236 seats  
Total = **2,065 seats** (reduction of 98 seats)

### Previous Submission

Sanctuary = 1,906 seats  
Chapel = 257 seats  
Total = **2,163 seats**

## PARKING (ON-SITE)

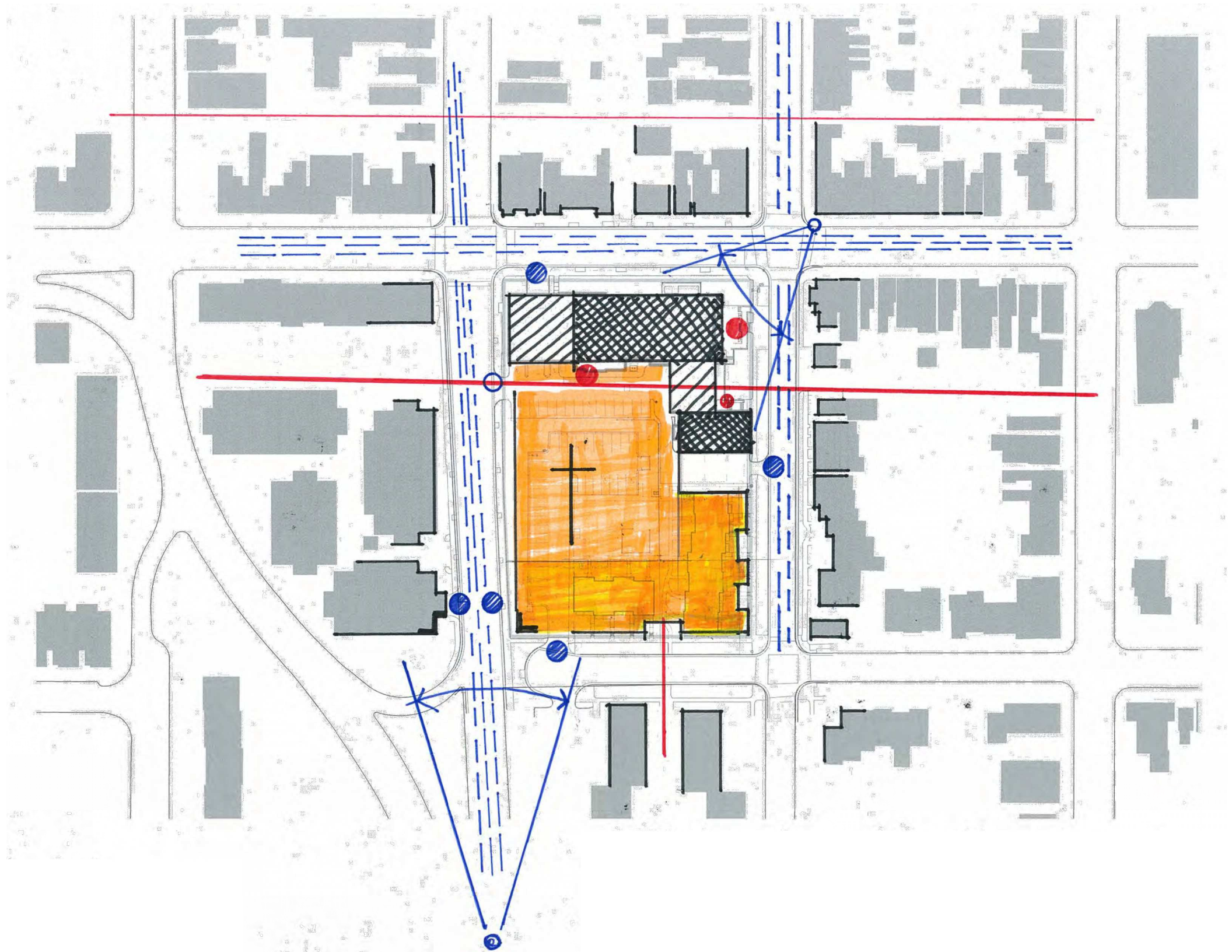
P1 = 100 spaces  
P2 = 100 spaces  
P3 = 106 spaces  
ML = 8 spaces  
Total = **314 spaces** (increase of 98 spaces)

P1 = 104 spaces  
P2 = 104 spaces  
ML = 8 spaces  
Total = **216 spaces**

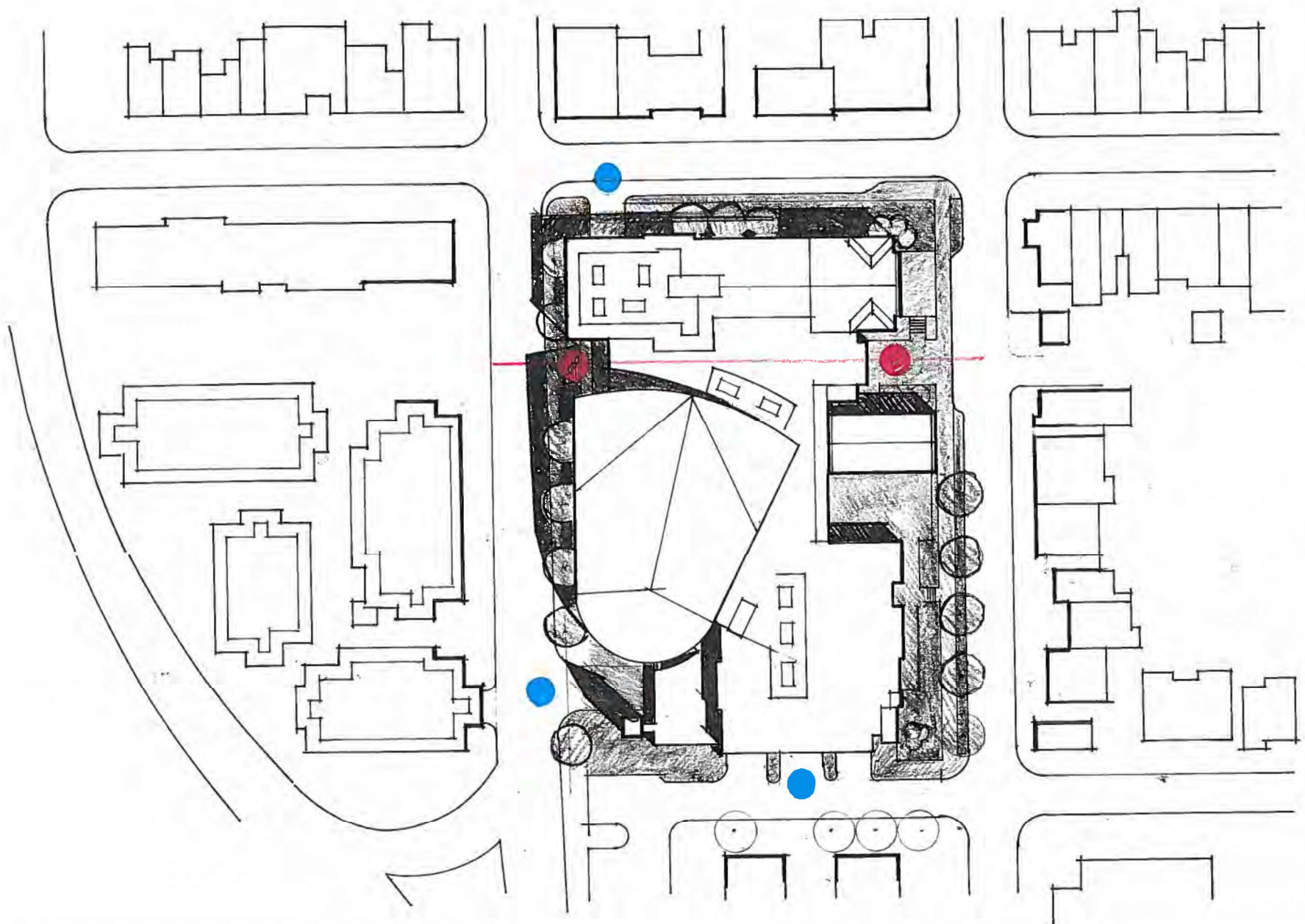
Alfred Street Baptist Church  
Alexandria, VA

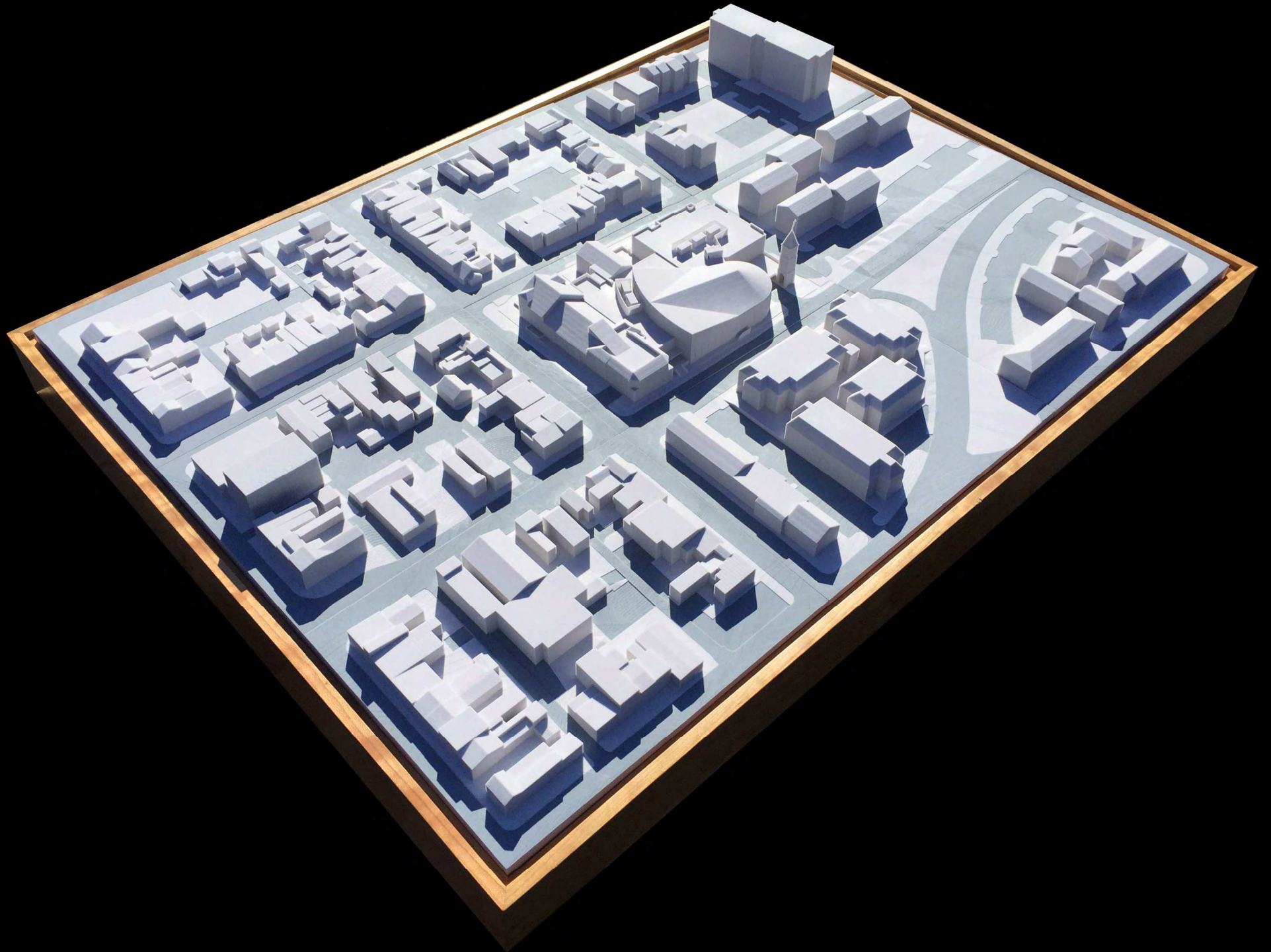
# BAR CONCEPT REVIEW

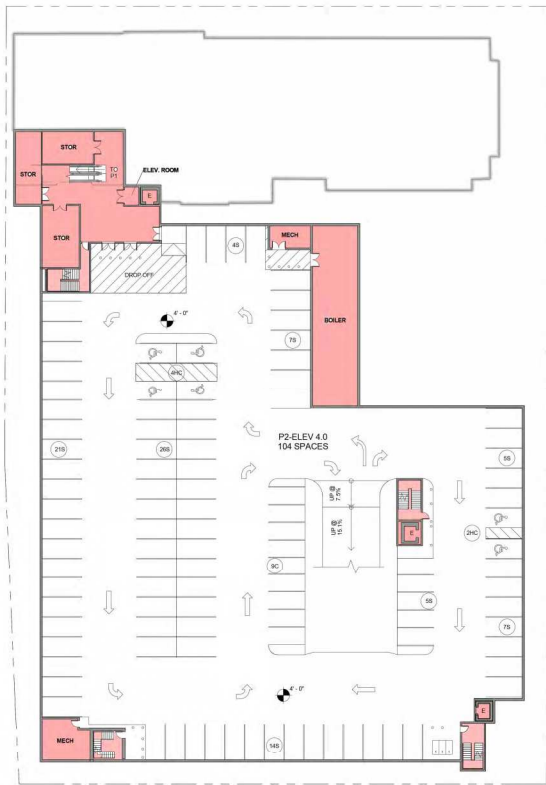
NOVEMBER 2016



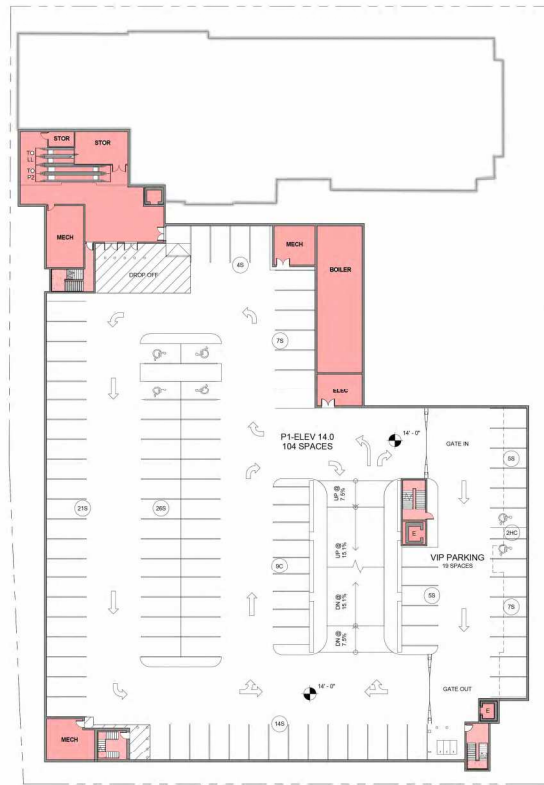








1 PARKING P2  
1" = 30'-0"

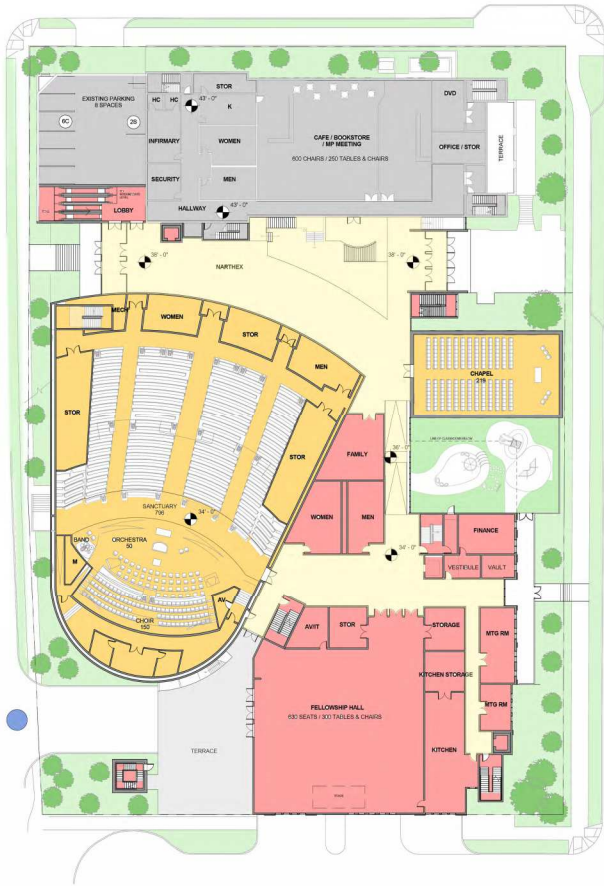


2 PARKING P1  
1" = 30'-0"

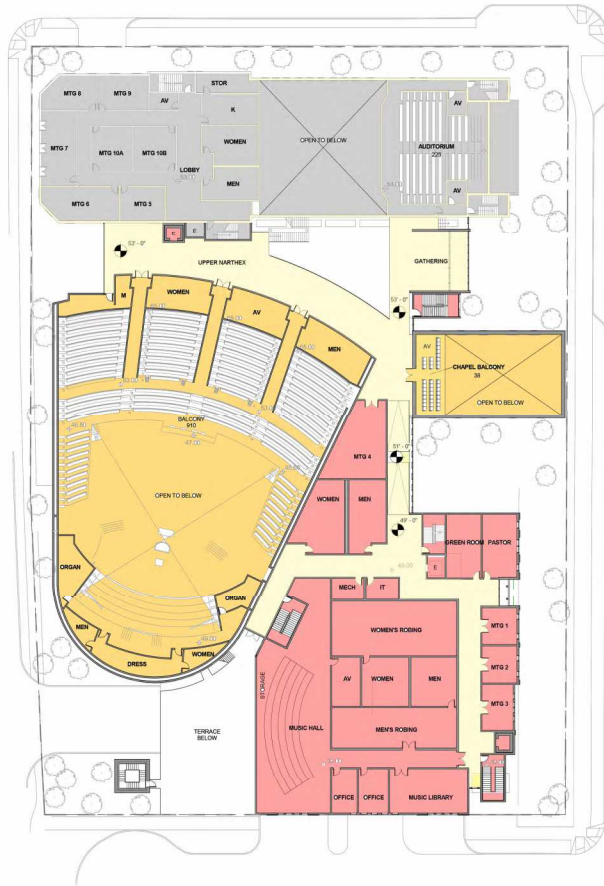


3 LOWER LEVEL  
1" = 30'-0"

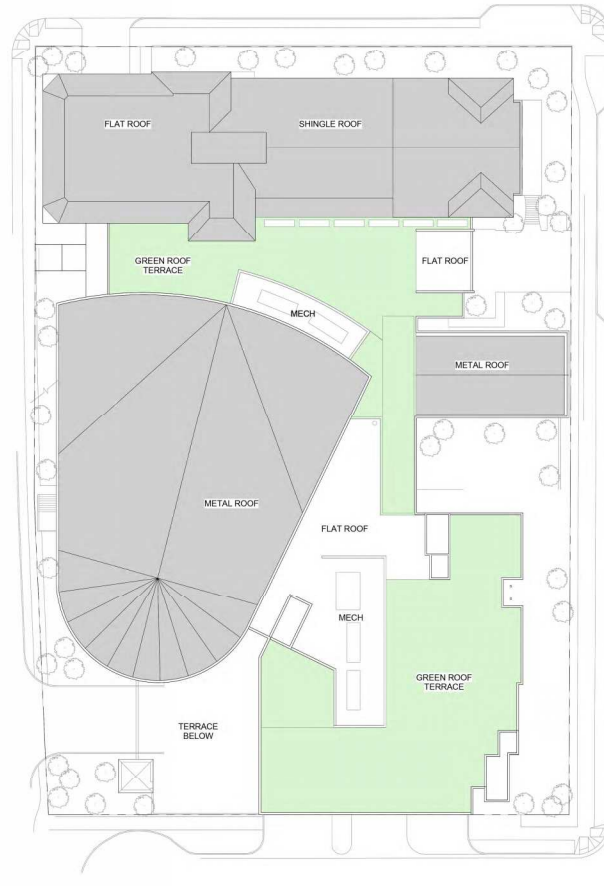




1 MAIN LEVEL  
1" = 30'-0"



2 UPPER LEVEL  
1" = 30'-0"



3 ROOF  
1" = 30'-0"



MARCH 2016



MAY 2016



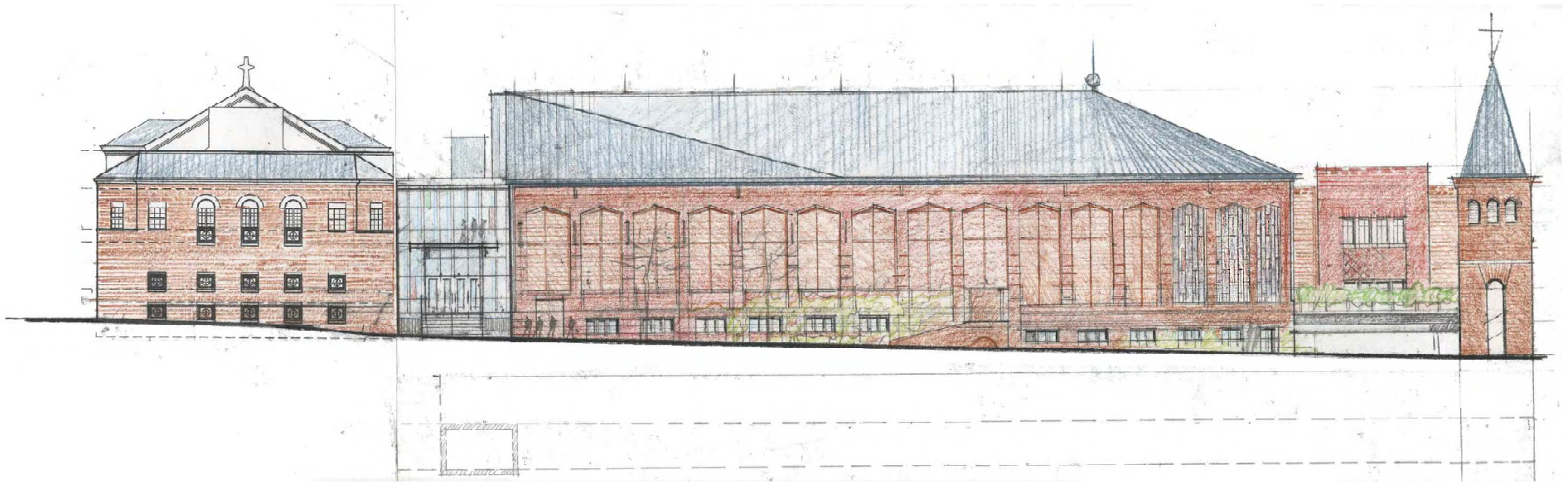


MARCH 2016

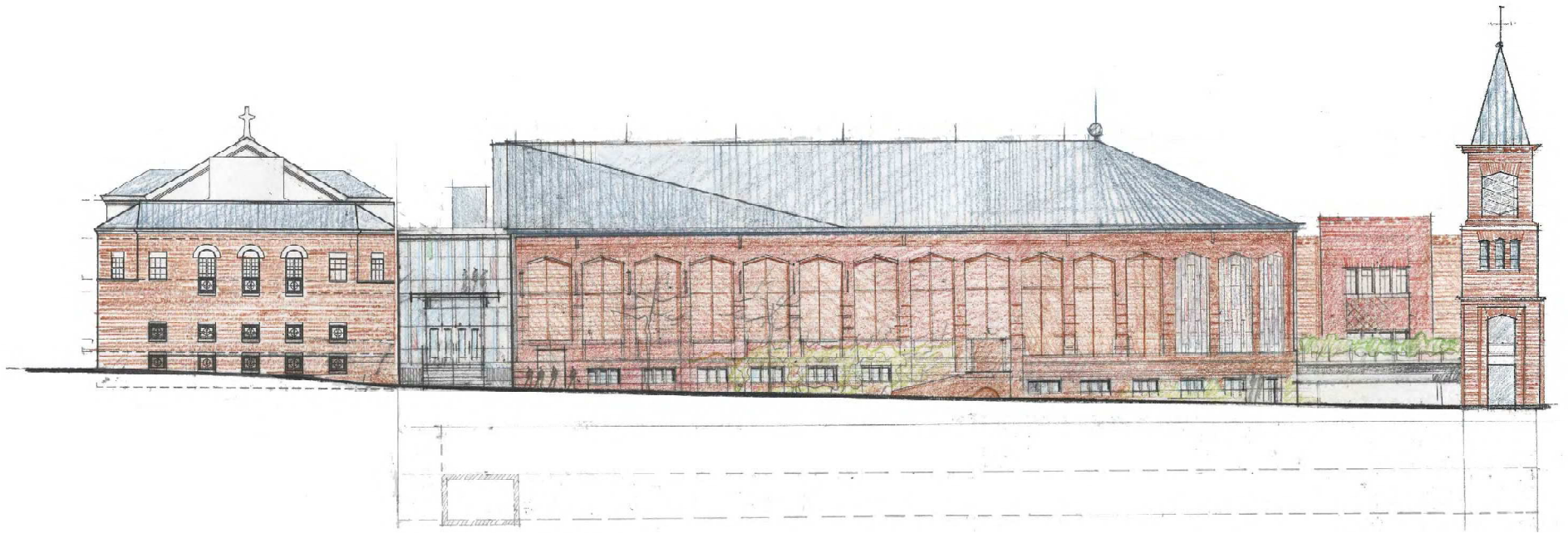


MAY 2016





MARCH 2016



MAY 2016



Alfred Street Baptist Church  
Alexandria, VA

# BAR CONCEPT REVIEW

COMMENTS



# Alfred Street Baptist Church

## Alexandria, VA

In summary, the Board supported the height, scale, mass and general architectural character as submitted with direction to the applicant to continue to work on the following:

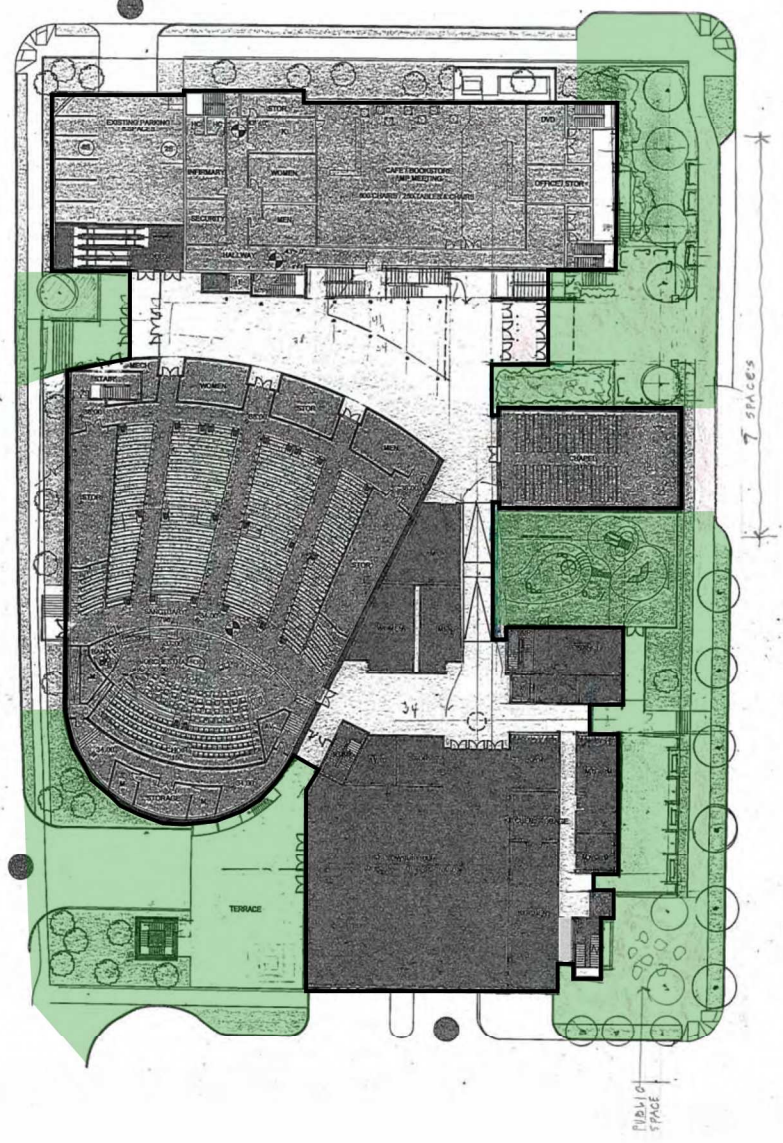
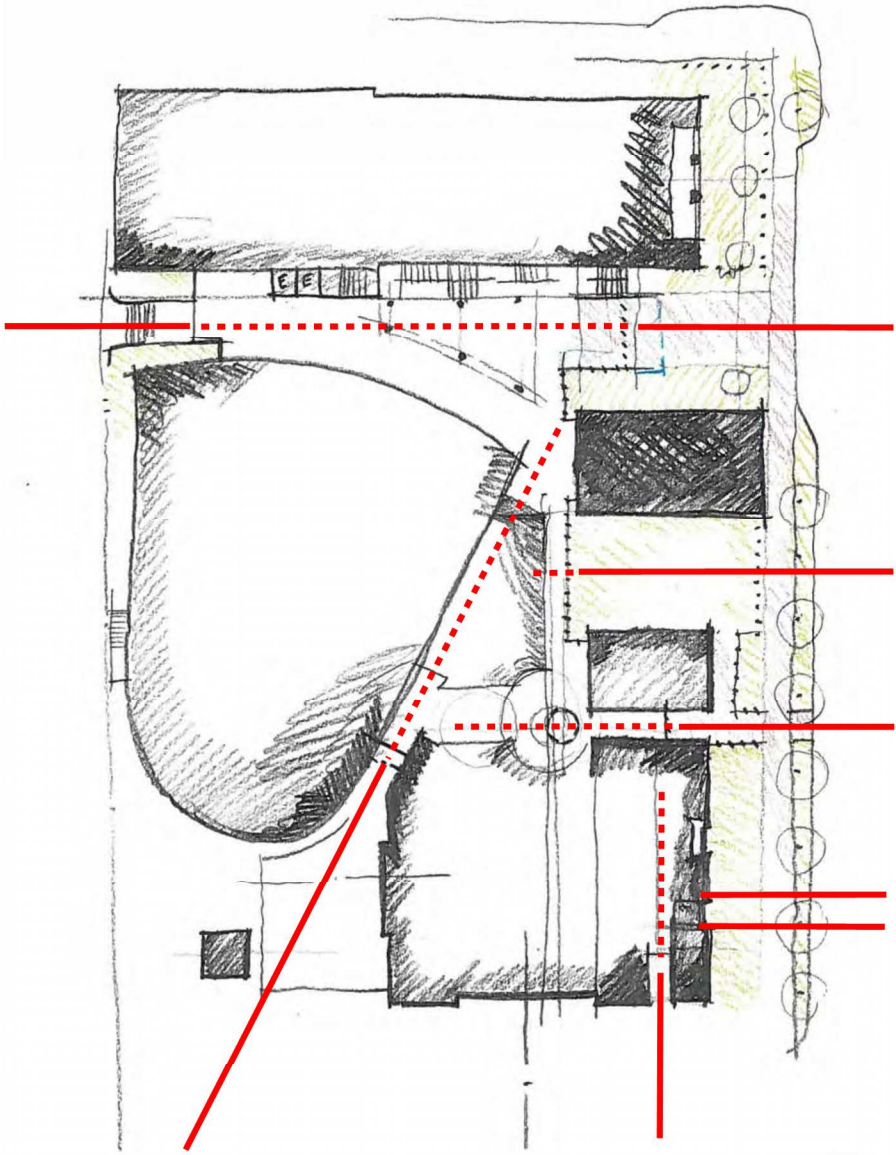
- Increase the site's physical and/or visual porosity, building on the design parti of a collection of separate buildings on the site.
- Emphasize a sense of entry on Alfred Street and also refine the townhouse character on South Alfred Street.
- Restudy the roof form at north end of the sanctuary above the balcony to eliminate the vertical, triangular roof/wall.

Alfred Street Baptist Church  
Alexandria, VA

## BAR CONCEPT REVIEW

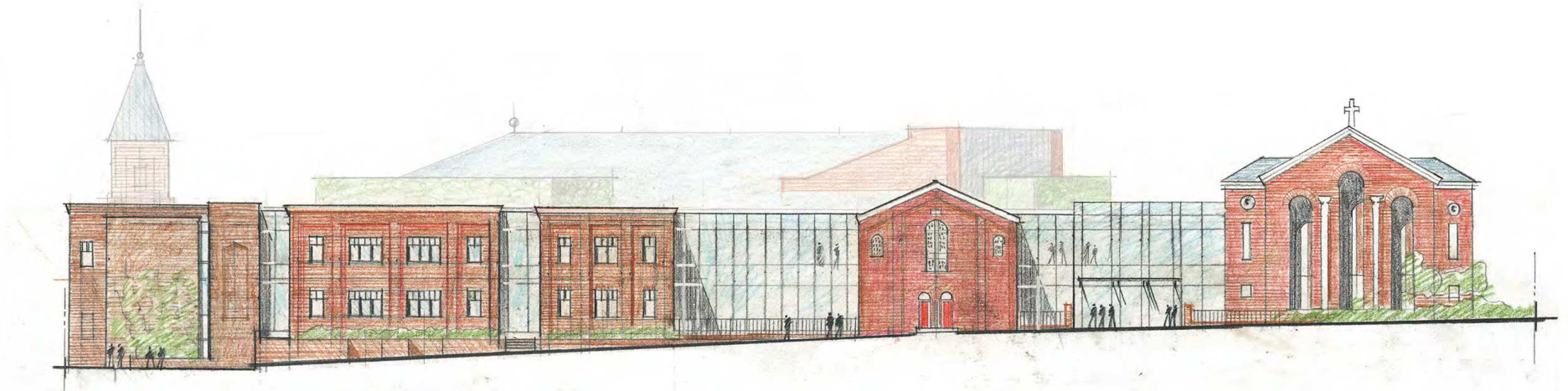
DESIGN REFINEMENTS





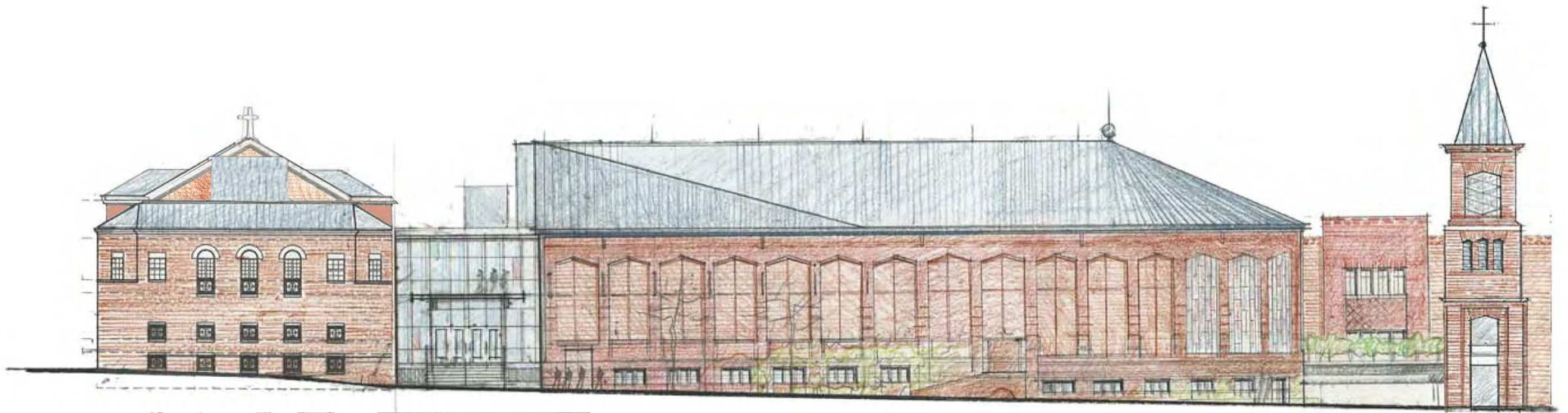


NOVEMBER 2016

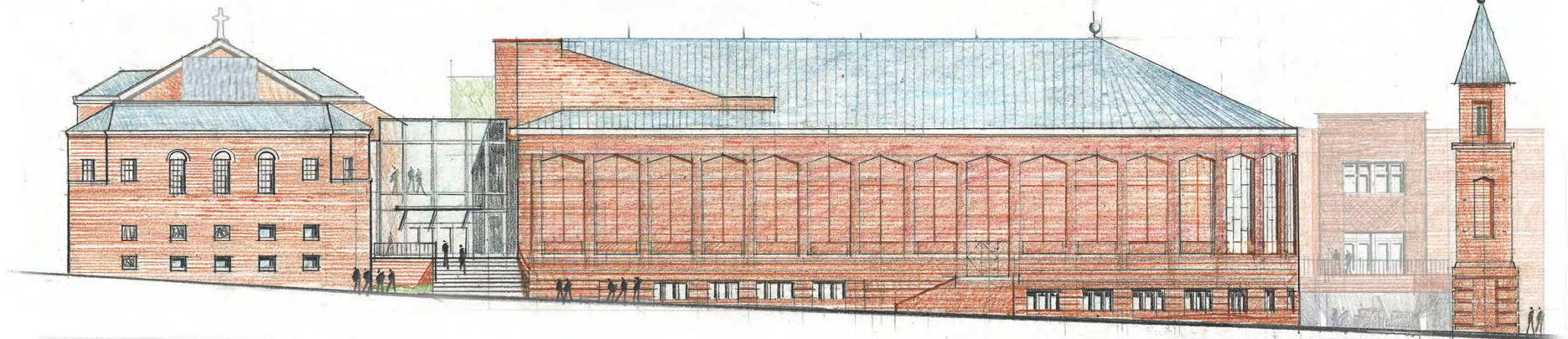


FEBRUARY 2017





NOVEMBER 2016



FEBRUARY 2017





NOVEMBER 2016



FEBRUARY 2017





WOLF STREET  
1" = 60'-0"



















NOVEMBER 2016













NOVEMBER 2016















NOVEMBER 2016







NOVEMBER 2016











NOVEMBER 2016





# NEXT STEPS

- BAR 2<sup>nd</sup> Concept Review Hearing – February 15, 2017 at 7:30 p.m.
- Planning Commission & City Council – Tentatively May or June Hearings