



Alfred Street Baptist Church

Third Community Meeting

NOVEMBER 7, 2016



Alfred Street Baptist Church

Third Community Meeting

WELCOME – PASTOR WESLEY



Alfred Street Baptist Church

Third Community Meeting

WHERE WE ARE IN THE PROCESS – MARY CATHERINE GIBBS

Alfred Street Baptist Church Third Community Meeting

IN THE MIDDLE OF THE DEVELOPMENT REVIEW PROCESS

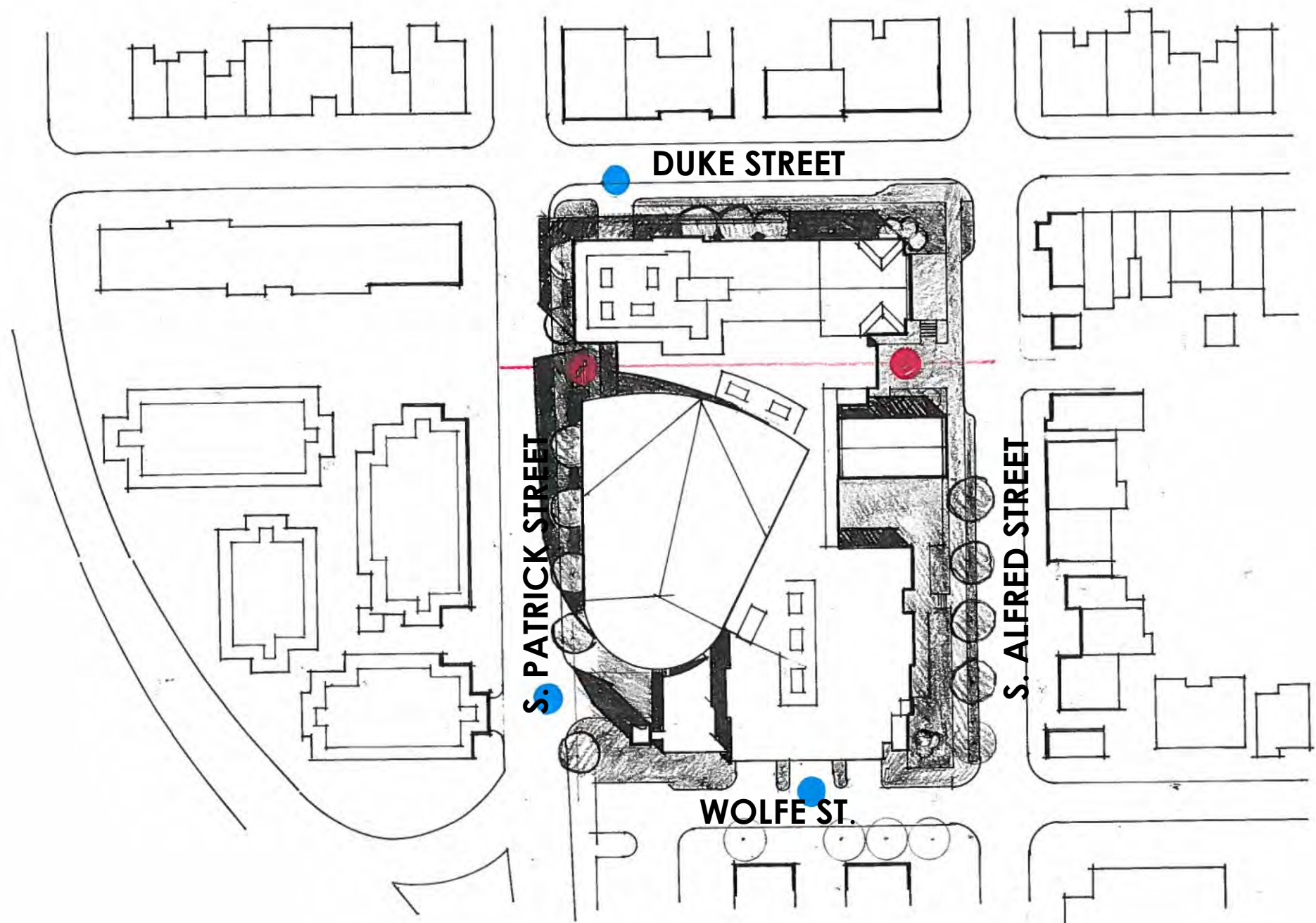
- ▶ Over the Summer, Updated the Traffic Impact Study
- ▶ BAR Concept Review – November 16, 7:30 p.m.



Alfred Street Baptist Church

Third Community Meeting

CURRENT PROPOSED DESIGN



DUKE STREET

S. PATRICK STREET

S. ALFRED STREET

WOLFE ST.



MARCH 2016

VIEW FROM S. ALFRED STREET



MAY 2016

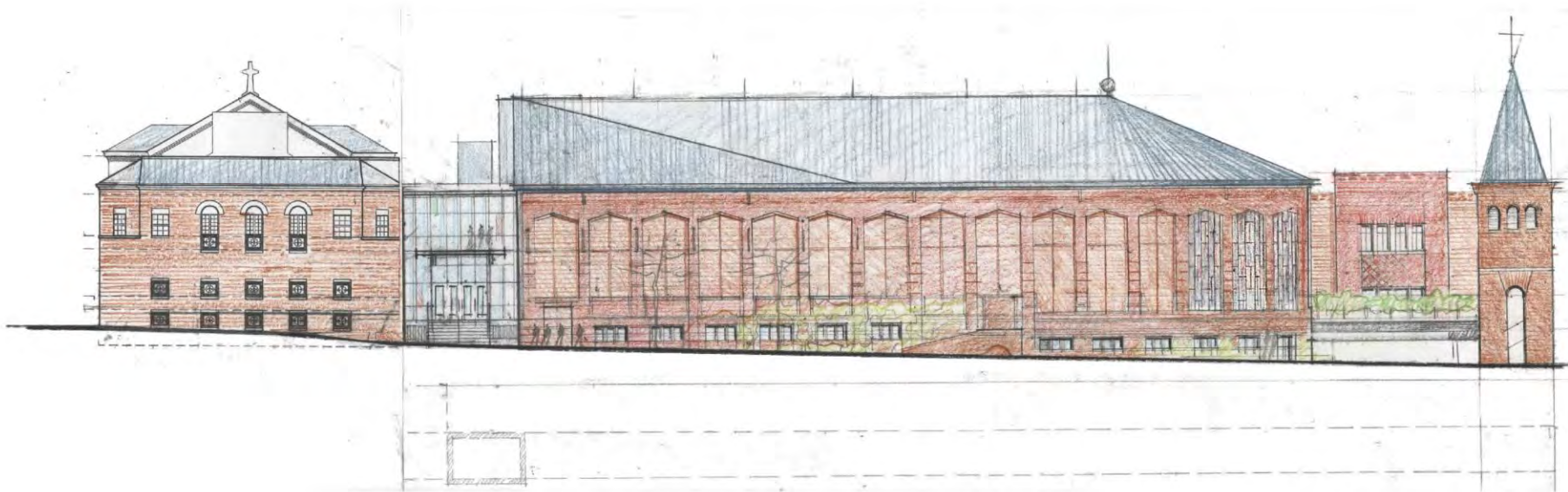


MARCH 2016

VIEW FROM WOLFE STREET



MAY 2016



MARCH 2016

VIEW FROM S. PATRICK STREET



MAY 2016



PERSPECTIVE FROM S. ALFRED STREET



Alfred Street Baptist Church

Third Community Meeting

TRANSPORTATION/PARKING – LARRY SEFCIK,
WELLS & ASSOCIATES

TRAFFIC IMPACTS

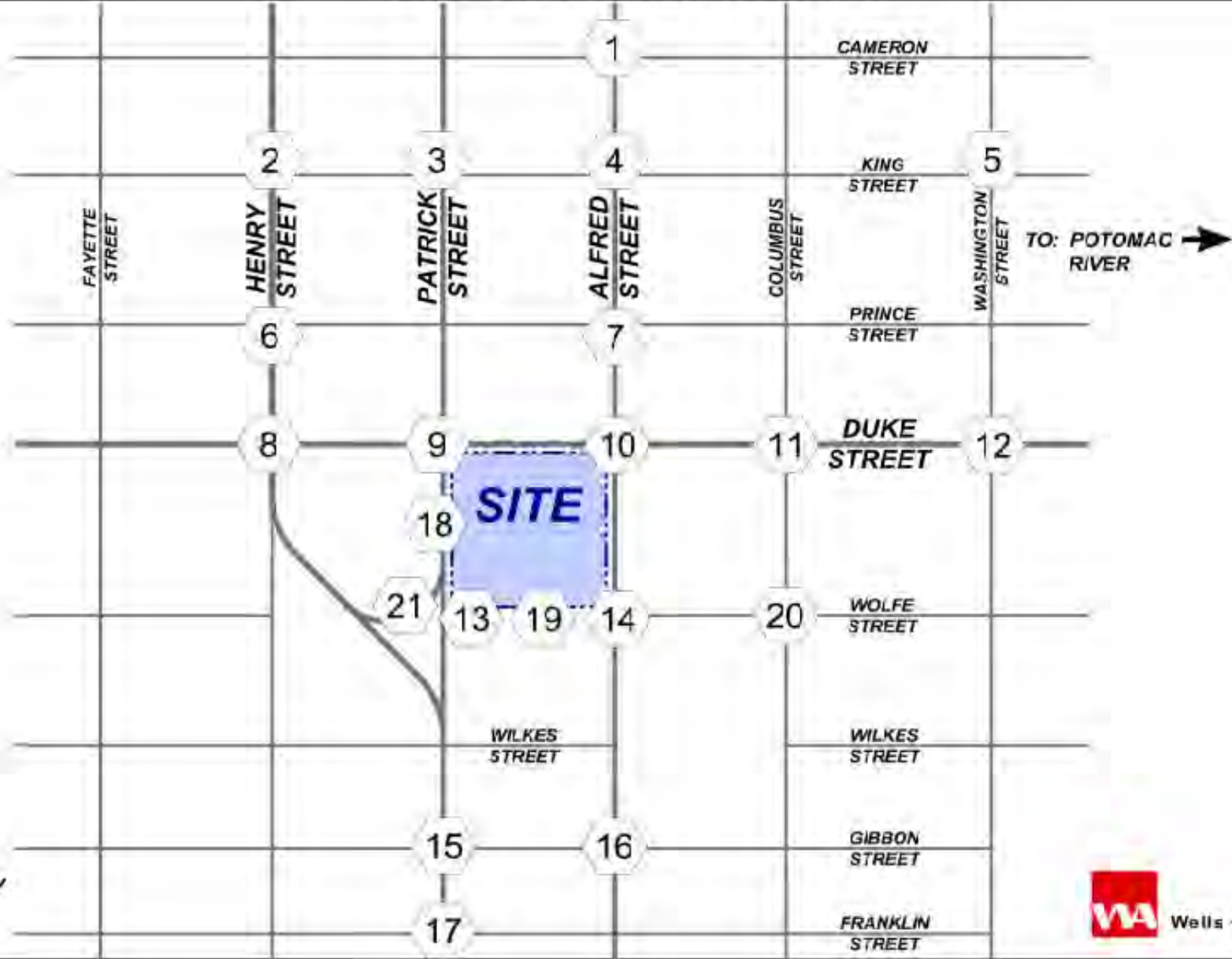


C:\PROJECTS\6001-5500\6383 ALFRED- BAP TST- CHURCH\GRAPHICS\5383 - PRESENTATION - 2016-11-01.DWG

STUDY INTERSECTIONS



NORTH



Wells + Associates, Inc.



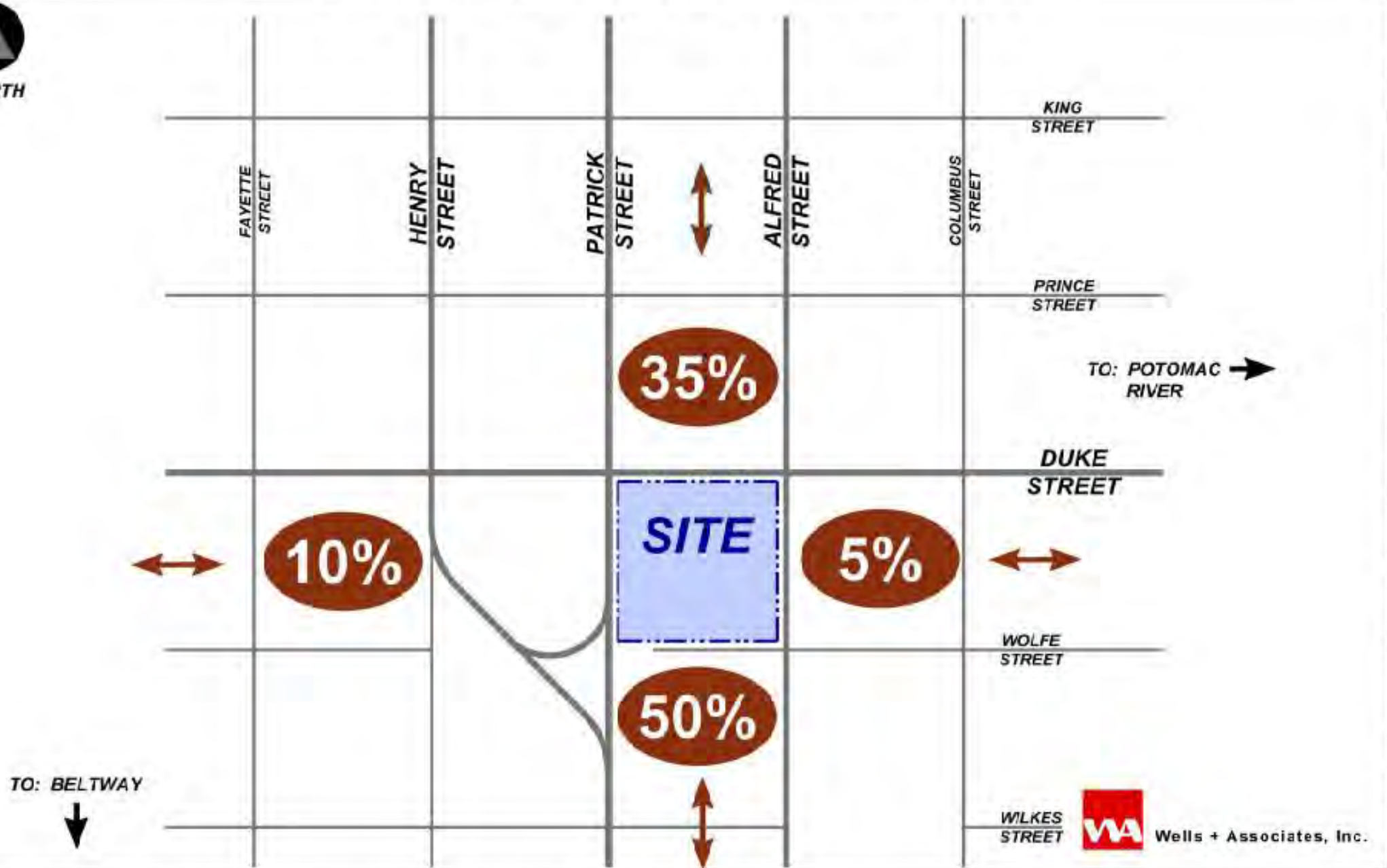
O:\PROJECTS\6001-6500\6383 ALFRED BAPTIST CHURCH\GRAPHICS\6383 - PRESENTATION 2016.11.01.DWG



WHERE PEOPLE ARRIVE / LEAVE FROM



NORTH



WILKES
STREET



Wells + Associates, Inc.

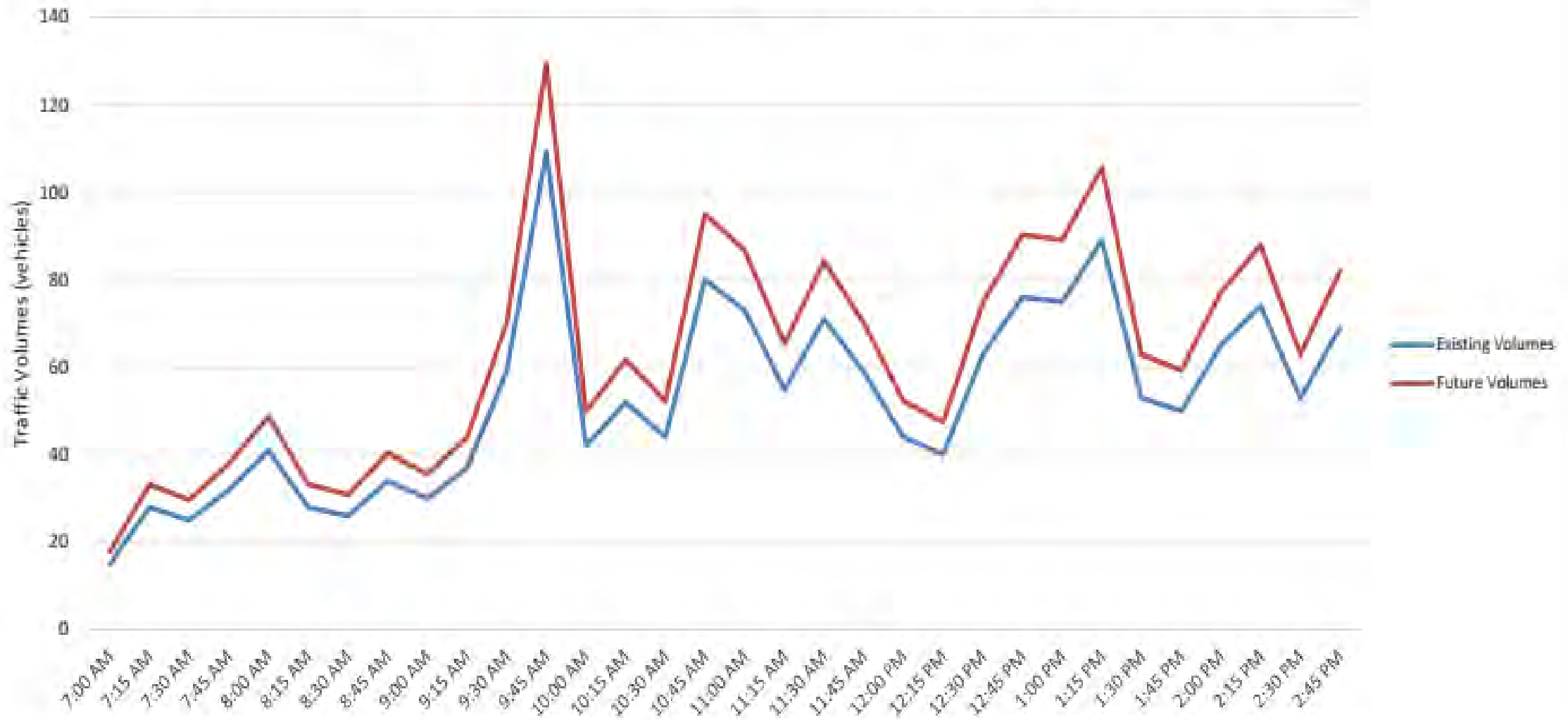
DATE PLOTTED: 12/10/03 8:50 AM PROJECT: WASHINGTON METRO STATION 301E 101 301E

Total Intersection Traffic Volumes at S. Patrick Street and Duke Street



SUNDAYS

Northbound Left Turn Traffic Volumes at the Intersection of S. Patrick Street and Duke Street



SUNDAYS

PARKING



On-Site Parking and Parking w/i 300 Feet

O:\PROJECTS\6001-6500\6383 ALFRED BAPTIST CHURCH\GRAPHICS\6383 - PRESENTATION 2016.11.01.DWG



ON-SITE PARKING LOT LOCATIONS



NORTH



ON-SITE PARKING LOT SUMMARY

PROPOSED (ON-SITE)	216
(WITHIN 300')	48
(WITHIN 300')	194
TOTAL PROPOSED	458

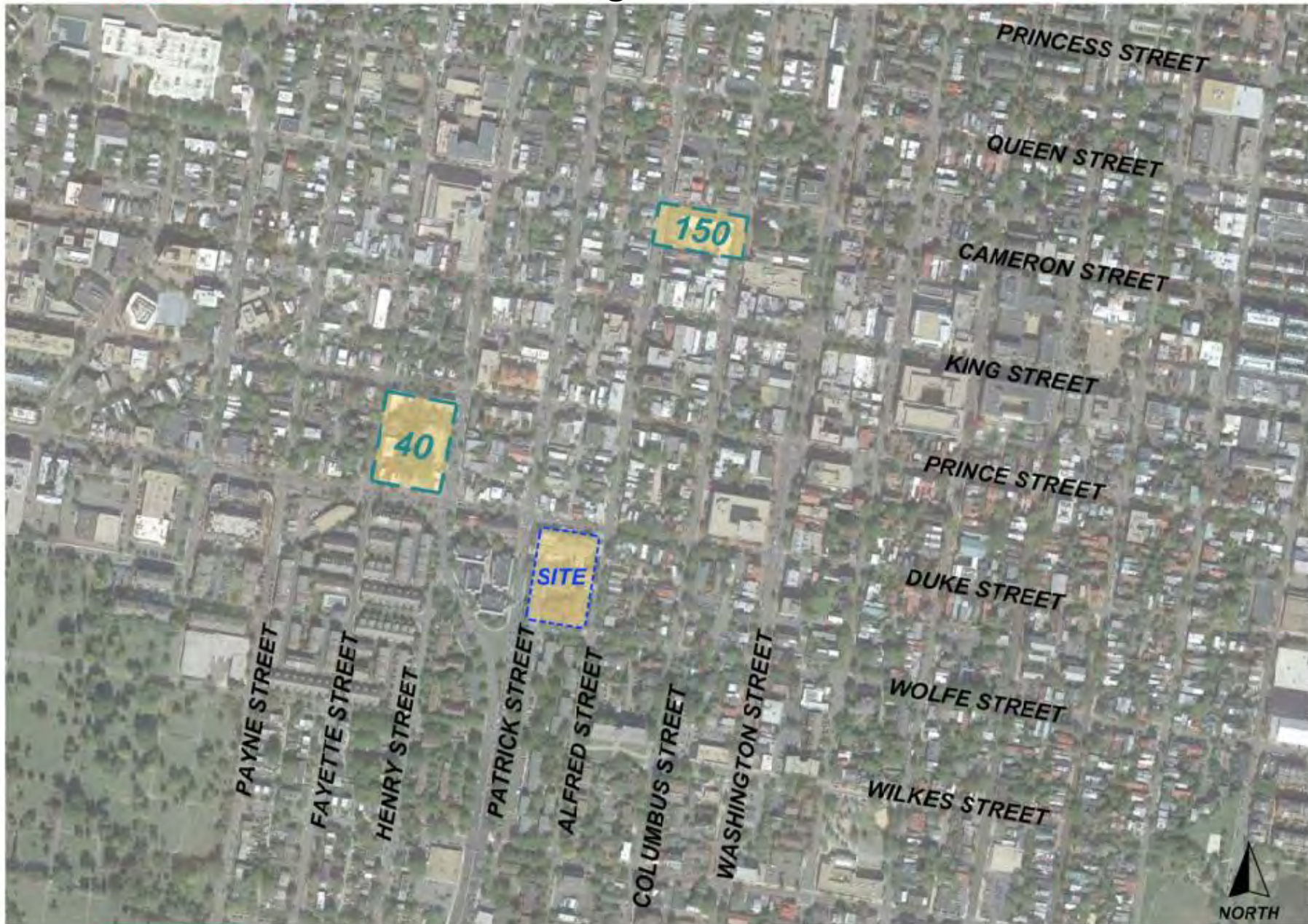
REQUIREMENT	433
EXCEEDS REQUIREMENT	25

REQUIREMENT 1 SPACE / 5 SEATS
 2,163 SEATS
 5 SEATS / SPACE = 433 SPACES



Wells + Associates, Inc.

Off Site Parking Lot Locations



O:\PROJECTS\6001-6500\6383 ALFRED BAPTIST CHURCH\GRAPHICS\6383 - PRESENTATION 2016.11.01.DWG



OTHER AVAILABLE OFF-SITE PARKING LOT LOCATIONS



OTHER AVAILABLE OFF-SITE PARKING LOT SUMMARY

ALFRED ST GARAGE	150
COAL LOT	40
TOTAL OFF-SITE	190

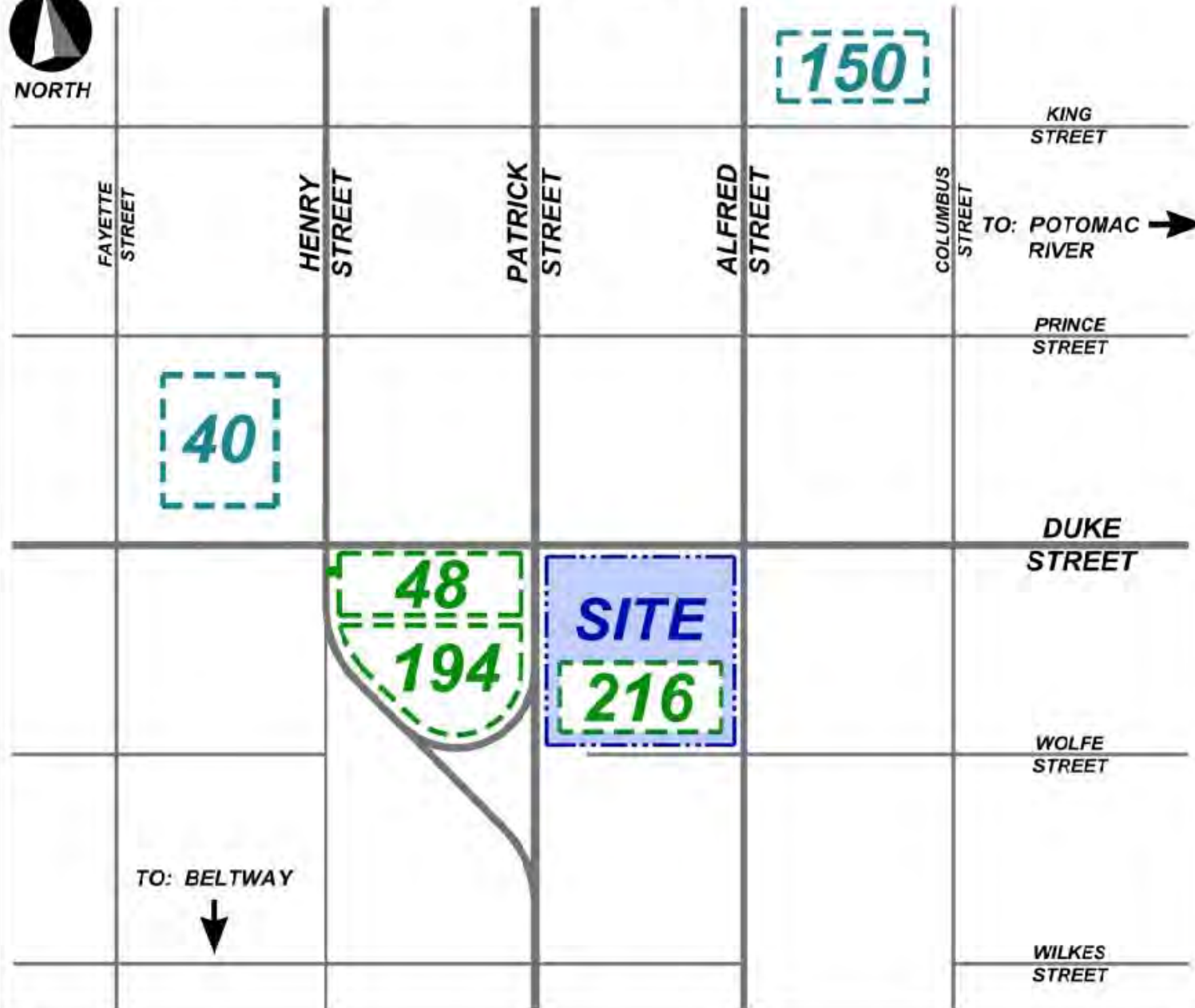


Wells + Associates, Inc.

TOTAL PARKING LOT LOCATIONS



NORTH



TOTAL PARKING LOT SUMMARY

PROPOSED (ON-SITE)	216
(WITHIN 300')	48
(WITHIN 300')	194
OFFSITE	40
OFFSITE	150
TOTAL PROPOSED	648

REQUIRED	433
DIFFERENCE	215

REQUIREMENT 1 SPACE / 5 SEATS
 PARKED AT 1 SPACE / 3.3 SEATS



Wells + Associates, Inc.



TRAFFIC FLOW IMPROVEMENTS



WEST STREET

PAYNE STREET

FAYETTE STREET

HENRY STREET

PATRICK STREET

ALFRED STREET

COLUMBUS STREET

KING STREET

PRINCE STREET

DUKE STREET

DROP-OFF

DROP-OFF

SITE

WOLFE STREET

NO PARKING
AT CORNER

WASHINGTON STREET

SAINT ASAPH STREET

WILKES STREET

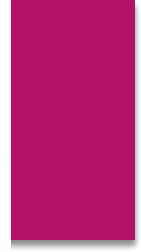


SUNDAY

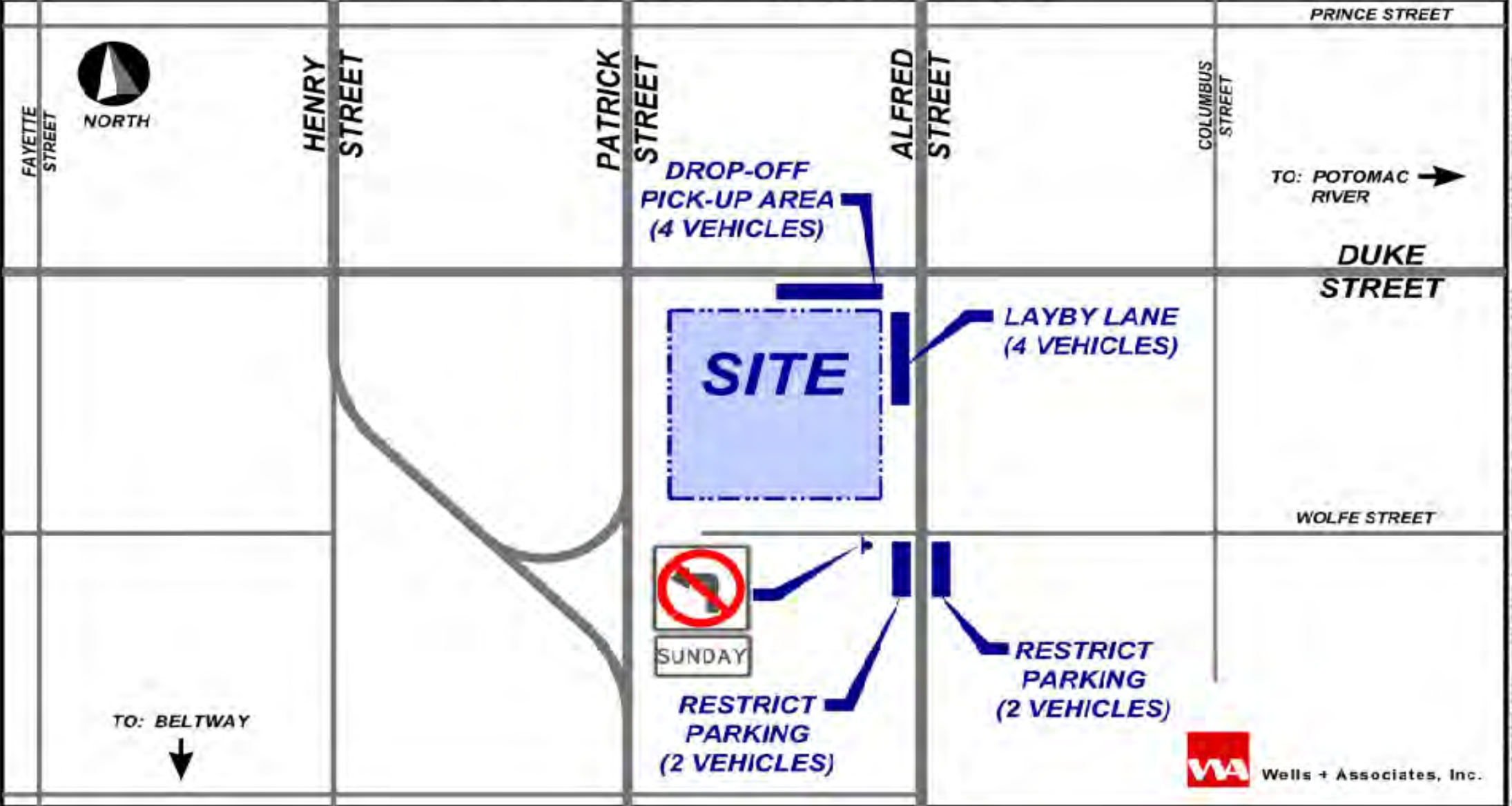


NORTH

O:\PROJECTS\6001-6500\6383 ALFRED BAPTIST CHURCH\GRAPHICS\6383 - PRESENTATION - 2016.11.01.DWG



TRAFFIC FLOW IMPROVEMENTS



© 2014 Wells + Associates, Inc. All rights reserved. WVA-2014-0112-01

TRAFFIC STUDY CONCLUSIONS/RECOMMENDATIONS

- **The expansion will generate 199 *additional* inbound vehicles and 198 outbound vehicles throughout the network during the peak Sunday period.**
- **15 signalized and 5 stop controlled study intersections have additional capacity on Sunday to adequately accommodate the increase in traffic due to the expansion.**
- **Based on the Zoning Ordinance, the expanded church's parking requirement is 433 spaces. 458 are proposed on-site which exceeds the requirement by 25 spaces.**
- **Additional off-site parking will continue to be available at the Coal Lot and 117 North Alfred Street Parking Garage.**
- **The On-Street Parking in the neighborhood will be relieved 6 out of 7 days a week because all the attendees of the Church's weekly programs can be accommodated in the on-site underground parking garage and the underground garage at the Alexandria Gateway building.**

Alfred Street Baptist Church Third Community Meeting

► QUESTIONS



Alfred Street Baptist Church Third Community Meeting

▶ NEXT STEPS:

BAR – CONCEPT REVIEW 11/16 7:30 P.M.

FOURTH COMMUNITY MEETING – EARLY WINTER 2017

PLANNING COMMISSION/CITY COUNCIL – MARCH/APRIL
2017